

PRODUCT GUIDE

Axiohm
Innovating for you



Specialist in thermal printing solutions since 1988

Axiohm now part of the TXCOM Group - Keeps on Innovating for YOU



AXIOHM - THE WORLDWIDE AUTHORITY FOR THERMAL PRINTING SOLUTIONS

AXIOHM, recognized as a worldwide authority for thermal printing solutions, keeps on improving and innovating to answer its customer needs. We are proud to offer a wide range of printer products. You can be sure to find an Axiohm printer that fits perfectly into your application.

In today's markets direct thermal printing is the technology of choice for receipt printing when reliability, ease of use and total cost of ownership are the leading criteria.

Our challenge is to offer very competitive products while maintaining the level of performance that meets our customer needs and guaranteeing the level of quality Axiohm is known for. To this end, employees at Axiohm are committed to continually presenting our customers with products that are truly innovative, permitting them to be ahead of the competition in their new undertakings.

Undisputed Quality & Reliability

- All of our products are designed in house with the latest technologies
- 98% of customers are satisfied with product quality
- Product annual return rate of products lower than the industry average



Product customization

AXIOHM - TXCOM has the design ability to offer a wide range of product customization so the final printer solution meets your expectations perfectly. We can customize software, hardware, mechanical features as well as colors and corporate logos.

Global Presence

Axiohm products are sold throughout the world.

Axiohm has a strong international culture with the ability to satisfy customers wherever they are located.

Axiohm reaches the 4 corners of the globe with a strong distribution network.

To find your closest Axiohm representative please visit our website www.axiohm.com

Axiohm
Innovating for you

TXCOM

A GLOBAL PRESENCE

SUMMARY

Guide to kiosk printer range	07
KPSL / KPST	08
KPSM / KPSH	09
KPSP	10
KALYPSO 60	11
TPSK	12
KALYPSO 80	13

Guide to printer mechanism range	14
ELECTRON	15
ASTERON	16
HTPx Series	17
CM /RM Series	18
TRITON 60	19
MGTA / MGTN Series	20
TRITON 80	21
XA /XB Series	22

Guide to controller board range	23
Guide to thermal printer range	24
TPOS	25
PCPR	26



As a producer AXIOHM - TXCOM fully supports the Restriction of Hazardous Substances (RoHS) and Waste Electrical & Electronic Equipment (WEEE) EU Directives and is committed to environmental policy.

A full range of printers, printing mechanisms and kiosk printers to satisfy all market requirements

AXIOHM - A printer for every need !

Gaming / Lottery

- Large paper roll capability
- High printing speed
- Unmatched reliability in a very demanding environment



Transportation

- Tailored to the harsh environmental demands (extreme climatic conditions, vibrations, etc.)
- Rugged design
- Thick paper capability



Gas Pump

- Extreme temperature and humidity range
- Minimum level of maintenance requirements
- Ultra reliable



Tests & Measurements / Healthcare

- Sharp printing quality
- Panel mount printers
- Easy to integrate



EFT & Handheld Terminals

- Lightweight & ultra compact design
- Low consumption
- Easy to integrate



Self-Service Terminals / Kiosks

- Heavy duty and turnkey kiosk solutions
- Ultra reliable
- Low maintenance



POS / Couponing / Hospitality

- High printing speed to avoid queuing at the cashier point
- Ultra-small footprint to maximize counter space
- Customers loyalty solutions

And many more:

ATM / Banking / Ticketing / Electronic Cash Registers / Weighing Scales / Car Wash Systems / Prepaid Phone Cards / Visitor Badges ...

Axiohm Services

Sales and Technical Support

Need help choosing the right product? Let our sales team assist you to find the best printer for your project.

Need a technical expertise for the integration process? Our tech support team will work with you to find the best solution.

Customized Solutions

With proven expertise, Axiohm is here to design a custom solution based on customer specific needs such as :

- Custom designed part - printhead, cable length, etc
- Specific color or logo
- Software modifications

Based on the customer requirement, Axiohm confirms :

Technical Solution

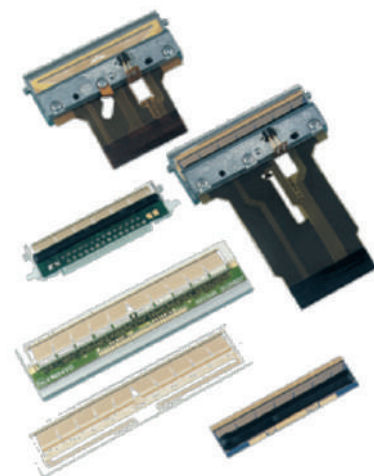
Schedule

Competitive Pricing

Spare Parts Kits

Save on maintenance costs with our spare parts kits available for all of our printers :

- Printhead
- Cutter kits
- Mechanical kits
- Complete mainframe kits
- Sensor kits



Bidirectional Driver

- Configure your printer through our new user-friendly **driver** interface
- Gather your printer's data & error information directly on Windows in real-time
- If you wish to develop your own specific driver, we have a Windows SDK module available for support that comes with examples



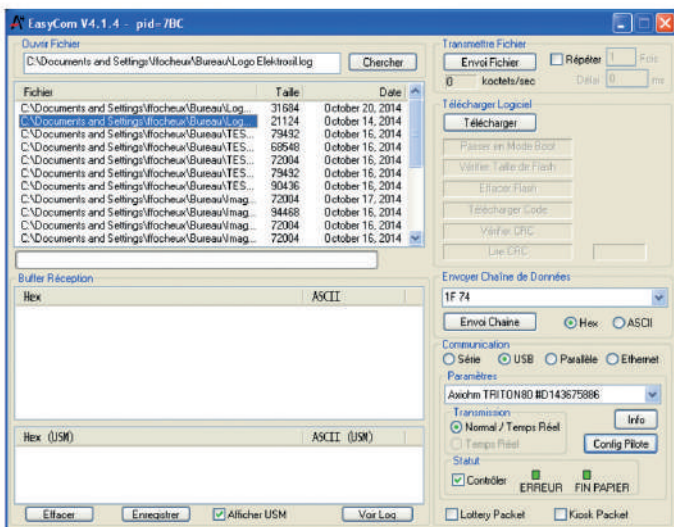
Windows Compatible



Interface USB & RS232

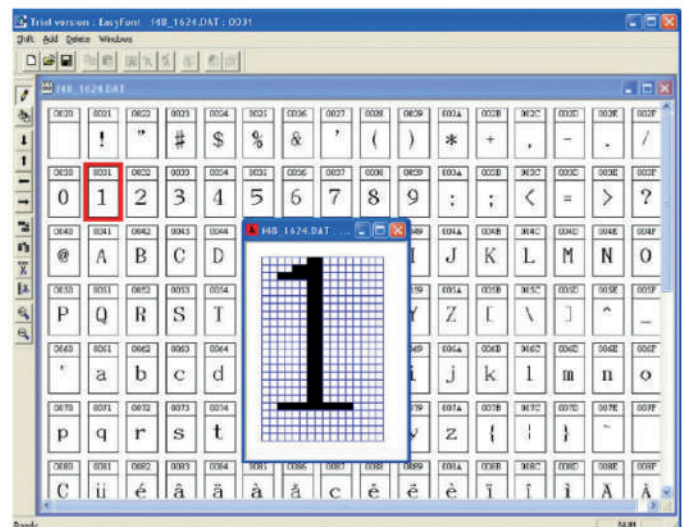


Easycom



A powerful interface to configure, test and download flash firmware to your Axiohm printer.

Easy Font



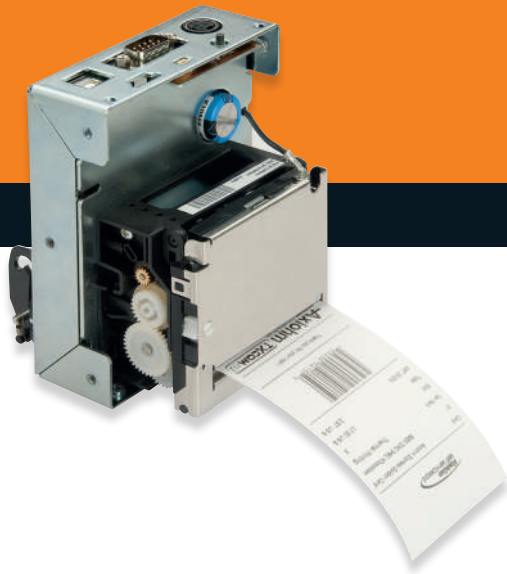
The easiest way to import, edit, convert and download the fonts you need for your Axiohm printer.

Guide to Kiosk Printer Range



	Characteristics	KPSL / KPST	KPSM / KPSH	KPSP	KALYPSO 60	TPSK	KALYPSO 80
Paper Width	54 mm	●					
	58 mm	●	●	●	●		●
	60 mm	●	●	●	●	●	●
	80 mm						●
	82.5 mm						●
Voltage	12V	●	●	●	●	●	●
	24V	●	●	●	●	●	●
Cutter	Auto Cutter	Guillotine	Guillotine	Guillotine	Guillotine	Tear off blade with integrated paper chute	Guillotine
Paper loading	Clamshell™					●	
	Autoload	●	●	●	●		●
Interface	RS232	●	●	●	●	●	●
	USB	●	●		●		●

Applications	Gas Pump				●	●	●
	Transportation (Mass transit ticketing)	●	●	●	●	●	●
	Automatic Teller Machine / Cash Dispenser	●	●	●	●		●
	Gaming/Lottery (VLT)						●
	Vending Machine	●	●	●	●		●
	Postal Services Kiosks	●	●	●	●		
	Photograph Kiosks	●	●	●	●		
	Self Check Out	●	●	●	●		●



KPSL / KPST

54 - 58 - 60 mm

KEY FEATURES

- Very compact design
- Easy to integrate
- High speed printing



Characteristics	Unit	KPSL	KPST
Printing Speed (max)	mm/s	150 (12V) - 250 (24V)	100 (12V) - 150 (24V)
Printing Width	mm	56	52
Resolution	dot/mm	8	
Number of Dots	dot	448	
Number of Columns	column	28 or 37 max	
Character Size	dot*dot	12 x 24 or 16 x 24	
Resident Code Page	---	CP 437, 737, 850, 852, 858, 860, 862, 863, 865, 866, 1252, 1256 + EasyFont Compatible	
Bar Code Type	---	Code 39, 93, 128, Interleaved 2/5, UPC-A, UPC-E, JAN8 (EAN8) & JAN13 (EAN13), Codabar, PDF417, QR Code, Data matrix	
Paper Width	mm	58 - 60	54
Paper Roll Diameter	mm	up to 200	
Paper Thickness	µm	From 60 to 100	From 60 to 190
Paper Loading	---	Auto loading	
Operating Voltage	VDC	12 or 24 V	
Power Consumption	W	75	
Head Pulse Life	pulse	1x10 ⁸	
Mechanical Reliability	Km	100	
Dimensions (W*D*H)	mm	95 x 93 x 118	
Weight	g	960	
Operating Temperature	°C/F	- 25 to + 70 / -13 to + 158	
Operating Humidity	% RH	20 to 85 (non condensing)	
Cutter	---	Guillotine (full and partial cuts)	
Cutter Life	cuts	1 Million	500 thousands
Data Buffer	Kbytes	4	
Interface	---	RS232 or USB 2.0	
Driver	---	Windows™ 00 / XP / Vista / Linux / Seven / Eight	
CEM & Safety Standards	---	UL60950-1, CSA 22.2-60950-1, IEC60950, CE Class B, FCC Class B, ROHS, REACH	
Sensors	---	Top of form and paper out	
Accessories	---	Power supply	

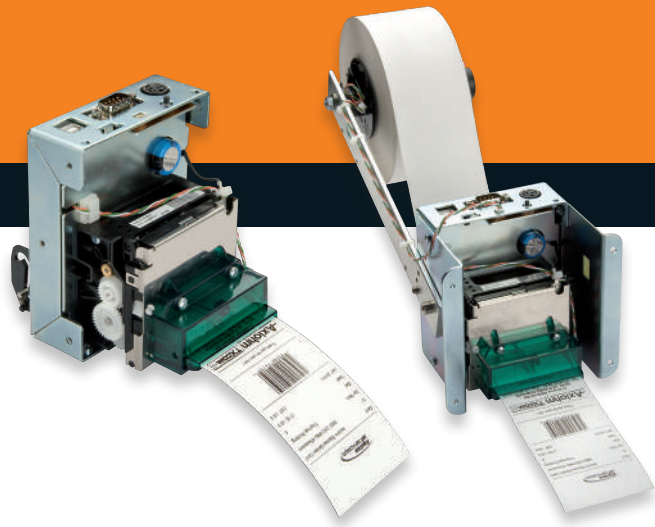


KPSM / KPSH

58 - 60 mm

KEY FEATURES

- Compact and rugged design
- Easy to integrate
- High speed printing



Characteristics	Unit	KPSM	KPSH
Printing Speed (max)	mm/s	150 (12V) - 250 (24V)	
Printing Width	mm	56	
Resolution	dot/mm	8	
Number of Dots	dot	448	
Number of Columns	column	28 or 37 max	
Character Size	dot*dot	12 x 24 or 16 x 24	
Resident Code Page	---	CP 437, 737, 850, 852, 858, 860, 862, 863, 865, 866, 1252, 1256 + EasyFont Compatible	
Bar Code Type	---	Code 39, 93, 128, Interleaved 2/5, UPC-A, UPC-E, JAN8 (EAN8) & JAN13 (EAN13), Codabar, PDF417, QR Code, Data matrix	
Paper Width	mm	58 - 60	
Paper Roll Diameter	mm	up to 200 (various angular position)	
Paper Thickness	µm	From 60 to 100	
Paper Loading	---	Auto loading	
Operating Voltage	VDC	12 or 24 V	
Power Consumption	W	75	
Head Pulse Life	pulse	1*10 ⁸	
Mechanical Reliability	Km	100	
Dimensions (W*D*H)	mm	95 x 120 x 118	125 x 120 x 118 / 126 x 289 x 118 (with paper roll holder)
Weight	g	960	960 / 1230 (with paper roll holder)
Operating Temperature	°C/F	- 25 to 70 / -13 to 158	
Operating Humidity	% RH	20 to 85 (non condensing)	
Cutter	---	Guillotine (full and partial cuts)	
Cutter Life	cuts	1 Million	
Data Buffer	Kbytes	4	
Interface	---	RS232 or USB 2.0	
Driver	---	Windows™ 00 / XP / Vista / Linux / Seven / Eight	
CEM & Safety Standards	---	UL60950-1, CSA 22.2-60950-1, IEC60950, CE Class B, FCC Class B, ROHS, REACH	
Sensors	---	Top of form and paper out and bezel with paper jam detection	
Accessories	---	Power supply	Power supply, paper roll holder with paper low sensor (option), sens'n print (option)





KEY FEATURES

- Compact and rugged design
- Easy to integrate
- High speed printing
- Paper presenter & retractor



Characteristics	Unit	KPSP
Printing Speed (max)	mm/s	150 (12V) - 250 (24V)
Printing Width	mm	56
Resolution	dot/mm	8
Number of Dots	dot	448
Number of Columns	column	28 or 37 max
Character Size	dot*dot	12 x 24 or 16 x 24
Resident Code Page	---	CP 437, 737, 850, 852, 858, 860, 862, 863, 865, 866, 1252, 1256 + EasyFont Compatible
Bar Code Type	---	Code 39, 93, 128, Interleaved 2/5, UPC-A, UPC-E, JAN8 (EAN8) & JAN13 (EAN13), Codabar, PDF417, QR Code, Data matrix
Paper Width	mm	58 - 60
Paper Roll Diameter	mm	up to 200 (various angular position)
Paper Thickness	µm	From 60 to 100
Paper Loading	---	Auto loading
Operating Voltage	VDC	12 or 24 V
Power Consumption	W	75
Head Pulse Life	pulse	1x10 ⁸
Mechanical Reliability	Km	100
Dimensions (W*D*H)	mm	125 x 181 x 118 (with paper roll holder)
Weight	g	960 / 1230 (with paper roll holder)
Operating Temperature	°C/F	- 25 to 70 / -13 to 158
Operating Humidity	% RH	20 to 85 (non condensing)
Cutter	---	Guillotine (full and partial cuts)
Cutter Life	cuts	1 Million
Presenter	---	Loop presenter and retractor
Data Buffer	Kbytes	4
Interface	---	RS232
Driver	---	Windows™ 00 / XP / Vista / Linux / Seven / Eight
CEM & Safety Standards	---	UL60950-1, CSA 22.2-60950-1, IEC60950, CE Class B, FCC Class B, ROHS, REACH
Sensors	---	Top of form and paper out and bezel with paper jam detection
Accessories	---	Power supply, paper roll holder with paper low sensor (option)

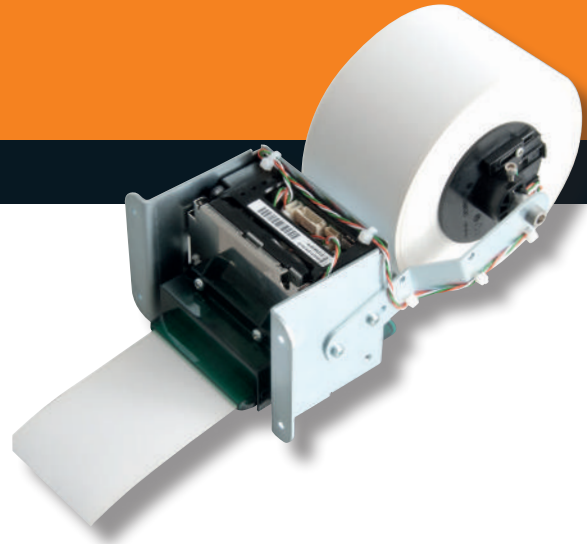


KALYPSO 60

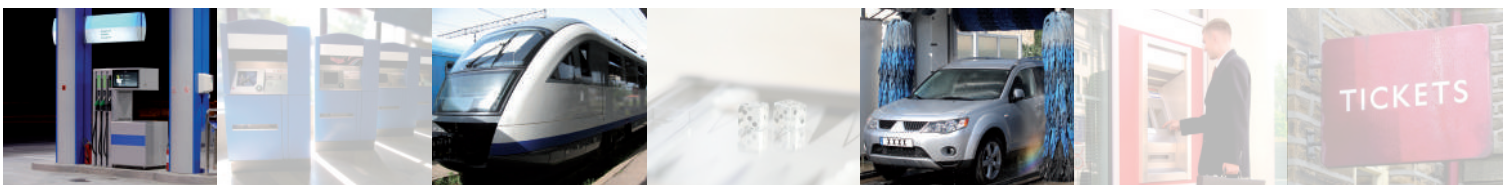
58 - 60 mm

KEY FEATURES

- Compact and reliable kiosk printer
- Easy to integrate



Characteristics	Unit	12 Volt	24 Volt
Max Print Speed	mm/s	150	250
Paper Width	mm	58 - 60	58 - 60
Print Width	mm	56	56
Resolution	Dots/mm DPI	8 203	8 203
Number of dots	dot	448	448
Paper Thickness	µm	up to 120 with cutter up to 190 without cutter	up to 120 with cutter up to 190 without cutter
Operating Voltage Range	V	12	24
Mechanism Reliability	Km	> of 100	> of 100
Dimensions (W*D*H)	mm	89 x 81 x 72	89 x 81 x 72
Cutter	mm	Guillotine auto-cutter (full & partial cuts)	Guillotine auto-cutter (full & partial cuts)
Cutter Reliability	---	1.5 Million cuts	1.5 Million cuts
Operating Temperature	°C/F	-20 to 60°C / -4 to 140 °F	-20 to 60°C / -4 to 140 °F
Operating Humidity	%RH	20 to 85	20 to 85
Interface	---	RS232 & USB 2.0	RS232 & USB 2.0
Command Set	---	Compatible ESC/POS TM	Compatible ESC/POS TM
User Flash memory	Kbytes	192	192
Sensors	---	End of Paper Jam free paper detection	End of Paper Jam free paper detection
Human interfaces	---	Paper Feed and Reset buttons LED indicator	Paper Feed and Reset buttons LED indicator
Options	---	Paper Arm with 3 positions Paper Low sensor input Power and interface cables	Paper Arm with 3 positions Paper Low sensor input Power and interface cables
Drivers	---	Windows TM XP / VISTA / Seven / Eight / CE – LINUX	Windows TM XP / VISTA / Seven / Eight / CE – LINUX
Firmware Features	---	Compatible EASYFONT™ Paper Low Management Top of form Management	Compatible EASYFONT™ Paper Low Management Top of form Management
Bar Code printing	---	1D and 2D	1D and 2D
CEM & Safety Standards		UL60950-1, CSA 22.2-60950-1, IEC60950, CE Class B, FCC Class B, ROHS, REACH	





TPSK

60 mm

KEY FEATURES

- Cutter with integrated paper chute
- Extended temperature range for outdoor applications



Characteristics	Unit	TPSK
Printing Speed (max)	mm/s	100
Printing Width	mm	48
Resolution	dot/mm	8
Number of Dots	dot	384
Number of Columns	column	24 or 42
Character Size	dot*dot	12 x 24 or 16 x 24
Resident Code Page	---	CP 437, CP 858, user fonts
Bar Code Type	---	Code 39, 128, Interleaved 2/5, UPC-A, UPC-E, JAN8 (EAN8) & JAN13 (EAN13)
Paper Width	mm	60
Paper Roll Diameter	mm	102
Paper Thickness	µm	60
Paper Loading	---	Clamshell TM
Operating Voltage	VDC	12 or 24 V
Power Consumption	W	55
Head Pulse Life	pulse	1x10 ⁸
Mechanical Reliability	Km	50
Dimensions (W*D*H)	mm	102 x 160 x 204
Weight	g	1700
Operating Temperature	°C/F	-10 to 70 / 14 to 158
Operating Humidity	% RH	20 to 90 (non condensing)
Cutter	---	Tear off blade with integrated paper chute
Cutter Life	cuts	300 K
Data Buffer	Kbytes	1
Interface	---	RS232 and TTL
Driver	---	Windows™ 98 / 00 / XP / Vista / CE - Linux / Seven / Eight
CEM & Safety Standards	---	UL60950-1, CSA 22.2-60950-1, IEC60950, CE Class B, FCC Class B, C-Tick, ROHS, REACH
Sensors	---	Paper low, paper out, door open, paper jam detector
Accessories	---	Power supply



KALYPSO 80

NEW

80 - 82.5 mm

KEY FEATURES









- Compact and reliable kiosk printer
- Easy to integrate
- High speed printing
- Paper presenter + retractor



Characteristics	Unit	12 Volt	24 Volt
Max Print Speed	mm/s	150	250
Paper Width	mm	80/82,5 (Optional 60 mm)	80/82,5 (Optional 60 mm)
Print Width	mm	72 / 80	72 / 80
Resolution	Dots/mm DPI	8 203	8 203
Number of dots	dot	576 / 640	576 / 640
Paper Thickness	µm	From 60 to 126	From 60 to 126
Operating Voltage Range	V	12	24
Mechanism Reliability	Km	> of 100	> of 100
Dimensions (W*D*H)	mm	65x151x74 115x151x74 (with presenter)	65x151x74 115x151x74 (with presenter)
Cutter	mm	Guillotine auto-cutter (full & partial cuts)	Guillotine auto-cutter (full & partial cuts)
Cutter Reliability		1.5 Million cuts	1.5 Million cuts
Operating Temperature	°C/F	-20 to 60°C / -4 to 140 °F	-20 to 60°C / -4 to 140 °F
Operating Humidity	%RH	20 to 85	20 to 85
Interface	---	RS232 & USB 2.0	RS232 & USB 2.0
Command Set	---	Compatible ESC/POS TM	Compatible ESC/POS TM
User Flash memory	Kbytes	192	192
Sensors	---	End of Paper Jam free paper detection	End of Paper Jam free paper detection
Human interfaces	---	Paper Feed and Reset buttons LED indicator	Paper Feed and Reset buttons LED indicator
Options	---	Paper Arm with 3 positions Paper presenter Paper Low sensor input Power and interface cables	Paper Arm with 3 positions Paper presenter Paper Low sensor input Power and interface cable
Drivers	---	Windows TM XP / VISTA / Seven / Eight / CE – LINUX	Windows TM XP / VISTA / Seven / Eight / CE – LINUX
Firmware Features	---	Compatible EASYFONT™ Paper Low Management Top of form Management	Compatible EASYFONT™ Paper Low Management Top of form Management
Bar Code printing	---	1D and 2D	1D and 2D
CEM & Safety Standards	---	UL60950-1, CSA 22.2-60950-1, IEC60950, CE Class B, FCC Class B, ROHS, REACH	



Guide to Printer Mechanism Range

									
Characteristics		Electron	Asteron	HTPx Series	CM/RM Series	Triton 60	MHTA / MGTA Series	Triton 80	XA/XB Series
Paper Width	58 mm	●	●	●	●	●			
	60 mm			●	●	●			
	80 mm						●	●	●
	82,5 mm						●	●	●
	2*38 mm						Option (MHTA)		
Voltage	5V	●	●	●					
	12V		●	●	●	●	●	●	
	24V		●	●	●	●	●	●	●
Cutter	Cutter					Guillotine	Guillotine	Guillotine	Rotative
	Tear bar	Option	●	●	Option	Option	Option (MGTA)		●
Paper loading	Front paper entry (Clamshell™)	●	●	●			●	●	
	Bottom paper entry (Autoload)				●	●	●	●	
	Integrated controller board		Option			Standard		Standard	

Applications	Self - Service (ATM, etc ...)				●	●	●	●	●
	Electronic Fund Transfer - EFT	●							
	Gaming/Lottery						●	●	●
	Gas Pump				●	●	●	●	
	ECR / POS	●	●	●	●	●	●	●	●
	Test & Measurement / Healthcare	●	●	●	●	●	●		
	Transportation				●	●	●	●	
	Weighing Scales		●	●	●	●			
	Events Ticketing				●	●	●	●	

ELECTRON

58 mm



KEY FEATURES

- High printing speed
- Ability to handle large paper roll
- Optimized circular design for an easy integration



Characteristics	Unit	ELECTRON
Printing Speed (max)	mm/s	70
Printing Width	mm	48
Resolution	dot/mm	8
Number of Dots	dot	384
Paper Width	mm	58
Paper Thickness (max)	µm	60
Paper Loading	---	Clamshell™
Operating Voltage - Dot - Logic	VDC	4 - 8.5 V 2.7 - 5.5
Head Pulse Life	pulse	1*10 ⁸
Mechanical Life	km	50
Dimensions (W*D*H)	mm	68.6 x 26.3 x Ø30
Weight	g	32
Operating Temperature	°C/F	0 to 50 / 32 to 122
Cutting System	---	Optional tear bar
Cutter Life	cuts	NA
Compatible Board	---	Chipset solution (Micropico)
Sensors	---	Head temperature, Out of paper
Safety Standards	---	UL 60950-1, CSA 22.2-60950-1, CB (IEC60950-1), ROHS, REACH

CONTROLLER BOARD

- Chipset available - Micropico



ASTERON

Panel Mount Printer 58 mm

KEY FEATURES

- Integrated paper bucket
- 2 versions : with or without embedded controller board
- Various fixing holes or integration by clip
- Enhanced design protects against spills & dust



Characteristics	Unit	Asteron 5V	Asteron 12/24V
Printing Speed (max)	mm/s	60	
Paper Width	mm	58	
Printing Width	mm	48	
Resolution	dot/mm	8	
Number of Dots		384	
Paper Roll Diameter	mm	50	
Paper Thickness	µm	60 - 80	
Paper Loading	---	Clamshell™	
Operating Voltage Range	VDC	4,5 - 8 V	10 - 36 V
Head Pulse Life	pulse	1*10 ⁶	
Mechanical Life	km	50	
Dimensions (W*D*H)	mm	With integrated board : 78 x 85,7 x 57 Without board : 78 x 77 x 57	
Weight	g	With integrated board : 104 g Without board : 88 g	
Operating Temperature	°C/F	0/50 - 32/122	
Cutting System	---	Manual tear bar	
Interface	---	RS 232/TTL or USB 2.0	
Sensors	---	Head temperature, paper end, cover open (micro switch)	
Options	---	Available in charcoal or white casing	

CONTROLLER BOARD

- Embedded controller board



HTPx Series

60 mm



KEY FEATURES

- Integrated paper bucket
- Compact design
- Available in 5V / 12V / 24V



Characteristics	Unit	HTPN 9050 5V	HTP-9012 12V	HTP-9024 24V
Printing Speed (max)	mm/s	50	75	100
Printing Width	mm	48	48	48
Resolution	dot/mm	8	8	8
Number of Dots	dot	384	384	384
Paper Width	mm	60	60	60
Paper Thickness (max)	µm	60 to 80	60 to 80	60 to 80
Paper Loading	---	Clamshell™	Clamshell™	Clamshell™
Operating Voltage - Dot - Logic	---	4.5 - 7 V 4.75 - 5.25 V	10 - 15.2 V 4.75 - 5.25 V	20 - 26.4 V 4.75 - 5.25 V
Head Pulse Life	pulse	1*108	1*108	1*108
Mechanical Life	km	30	50	50
Dimensions (W*D*H)	mm	92.8 x 76 x 55	92.8 x 76 x 55	92.8 x 76 x 55
Weight	g	150	150	150
Operating Temperature	°C/F	0 to 50 / 32 to 122	0 to 50 / 32 to 122	0 to 50 / 32 to 122
Cutting System	---	Tear bar	Tear bar	Tear bar
Compatible Board	---	Minicont 5V	TPSB	TPSB
Sensors	---	Head temperature, Out of paper, Cover open (micro switch)		
options	---	Cover with latch		

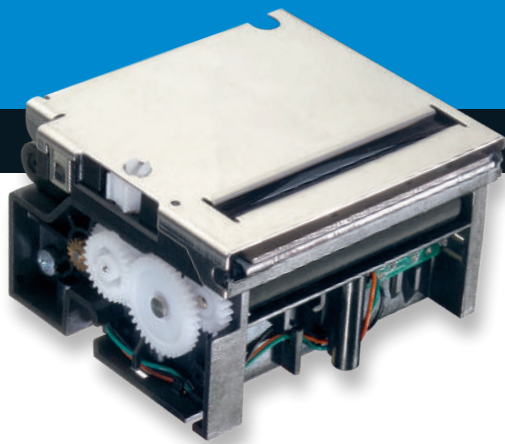
CONTROLLER BOARD

- Minicont 5V
- TPSB



CM/RM Series

Standard or Premium 58 - 60 mm



KEY FEATURES

- Ultra high speed version (Premium : up to 250 mm/s)
- Integrated robust cutter
- Single flex connection
- Card printing capability



Characteristics	Unit	CM /RM Standard		CM /RM Premium	
		CMDL /RMDL 12V	CMDG /RMDG 24V	CMDT /RMDT 12V	CMDV /RMDV 24V
Printing Speed (max)	mm/s	75	90	150	250
Printing Width	mm	48		56	
Resolution	dot/mm	8		8	
Number of Dots	dot	384		448	
Paper Width	mm	60		60	
Paper Thickness (max)	µm	CM : 60 to 275 - RM : 60 to 190		CM : 60 to 275 - RM : 60 to 190	
Paper Loading	---	Auto loading		Auto loading	
Operating Voltage - Dot - Logic	---	10 - 15.2 V 4.75 - 5.25 V	20 - 26.4 V 4.75 - 5.25 V	10 - 15.2 V 4.5 - 5.5 V	20 - 26.4 V 4.5 - 5.5 V
Head Pulse Life	pulse	1*10 ⁸		1*10 ⁸	
Mechanical Life	km	50		100	
Dimensions (W*D*H)	mm	74.5 x 61 x 32 (without cutter) - 74.5 x 65.75 x 42.1 (with cutter)		74.5 x 61 x 32 (without cutter) - 74.5 x 65.75 x 42.1 (with cutter)	
Weight	g	140 (without cutter) - 250 (with cutter)		140 (without cutter) - 250 (with cutter)	
Operating Temperature	°C/F	0 to 50 / 32 to 122		-20 to 60 / -4 to 140	
Cutting System	---	CM : Optional Tear bar - RM : Guillotine cutter (full and partial cuts)		CM : Optional Tear bar - RM : Guillotine cutter (full and partial cuts)	
Cutter Life	---	RM : 1 Million		RM : 1 Million	
Compatible Board	---	Compact Board II (RS 232 & USB) - Minicont Para (Centronics) Chipset solution (Microcomp II)		Compact Board II (RS 232 & USB) Chipset solution (Microcomp II)	
Sensors	---	Head temperature, Out of paper		Head temperature, Out of paper	
Options / Features	---	2 paper path entrances in standard		2 paper path entrances in standard	
Safety Standards	---	UL 60950-1, CSA 22.2-60950-1, CB (IEC60950-1), ROHS, REACH		UL 60950-1, CSA 22.2-60950-1, CB (IEC60950-1) , ROHS, REACH	

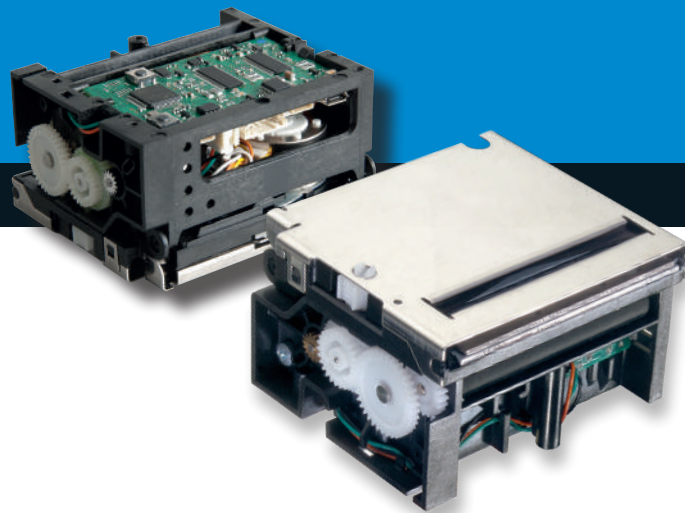
CONTROLLER BOARD

- Compact Board II
- Chipset available - Microcomp II



TRITON 60

58 - 60 mm



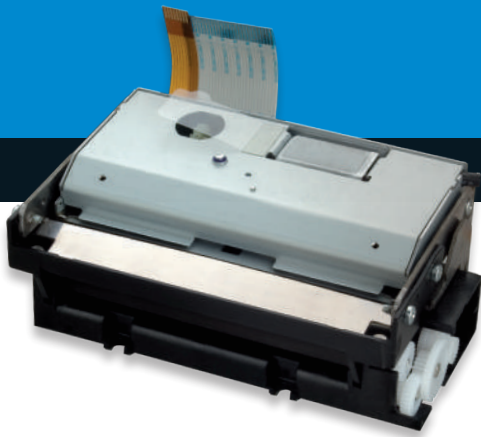
KEY FEATURES

- Printer, Cutter & Controller Board included into the smallest footprint available



Characteristics	Unit	12 Volt	24 Volt
Print Speed	mm/s	150	250
Paper Width	mm	60	60
Print Width	mm	56	56
Resolution	Dots/mm DPI	8 203	8 203
Number of Dots	dot	448	448
Paper Thickness	µm	60 to 190	60 to 190
Operating Voltage Range	V	12	24
Mechanism Reliability	Km	100	100
Cutter	---	Auto cutter (full & partial cuts)	Auto cutter (full & partial cuts)
Cutter Reliability	---	1.5 Million cuts	1.5 Million cuts
Operating Temperature	°C/F	-20 to 60°C / -4 to 140 °F	-20 to 60°C / -4 to 140 °F
Operating Humidity	%RH	20 to 85	20 to 85
Interface	---	RS232 & USB	RS232 & USB
Command Set	---	Compatible ESC/POS™	Compatible ESC/POS™
User Flash Memory	Kbytes	192	192
Sensors	---	End of Paper	End of Paper
Human Interface	---	Paper Feed and Reset buttons LED indicator	Paper Feed and Reset buttons LED indicator
Options	---	2 paper path entrances Paper Low sensor input Jam free paper detection Power and interface cables	2 paper path entrances Paper Low sensor input Jam free paper detection Power and interface cable
Drivers	---	Windows™ XP / VISTA / Seven / Eight / CE – LINUX	Windows™ XP / VISTA / Seven / Eight / CE – LINUX
Firmware Features	---	Compatible EASYFONT™ Paper Low Management Top of form Management	Compatible EASYFONT™ Paper Low Management Top of form Management
Bar Code Printing	---	1D and 2D	1D and 2D
CEM & Safety Standards	---	UL60950-1, CSA 22.2-60950-1, IEC60950, CE Class B, FCC Class B, ROHS, REACH	





MGTA / MGTN Series

80 / 82.5 / 2x38 mm

KEY FEATURES

- High-printing speed
- 2 paper paths - straight or Clamshell™
- Increased print speed and paper pull with Premium version



Characteristics	Unit	MHTA / MGTA		MHTN / MGTN Premium	
		12V	24V	12V	24V
Paper Width	mm	80 / 82.5 / 2*38		80 / 82.5	
Printing Width	mm	72 / 80		72 / 80	
Resolution	dot/mm	8		8	
Number of Dots	dot	576 / 640		576 / 640	
Operating Voltage - Dot - Logic	VDC	10.8 - 13.2 V 4.75 - 5.25 V	20 - 26.4 V 4.75 - 5.25 V	10.8 - 13.2 V 4.75 - 5.25 V	20 - 26.4 V 4.75 - 5.25 V
Printing Speed (max)	mm/s	100	180	150	250
Cutting System	---	Optional tear bar or guillotine cutter (full or partial cuts)		Optional tear bar or guillotine cutter (full or partial cuts)	
Paper loading	---	Clamshell™ or Auto loading		Clamshell™ or Auto loading	
Paper Thickness (max)	µm	60 to 120		60 to 120	
Dimensions (W*D*H)	mm	108.6 x 20.8 x 49.5 / 112.75 x 66.4 x 41.7		108.6 x 20.8 x 49.5 / 112.75 x 66.4 x 41.7	
Weight	g	120/370		380	
Head Pulse Life	pulse	1*10 ⁸		1*10 ⁸	
Mechanical Life	km	100		100	
Cutter Life	cuts	1 Million cuts		1,5 Million cuts	
Operating Temperature	°C/F	-20 to 60 / -4 to 140		-20 to 60 / -4 to 140	
Compatible Board	---	Compact Board II - Chipset solution : Microcomp II		Compact Board II - Chipset solution : Microcomp II	
Sensors	---	Head temperature, door open, out of paper, 2 sensors for 2*38 mm versions		Head temperature, door open, out of paper	
Options	---	Tear Bar Easy opening lever for Clamshell™ version			
Safety Standards	---	UL 60950-1, CSA 22.2-60950-1, CB (IEC60950-1), ROHS,REACH		UL 60950-1, CSA 22.2-60950-1, CB (IEC60950-1), ROHS,REACH	

CONTROLLER BOARD

- Compact Board II
- Chipset available (Microcomp II)



TRITON 80

80 - 82,5 mm

NEW

KEY FEATURES

- Printer, Cutter & Controller Board included into the smallest footprint available
- Compact and easy-to-integrate design



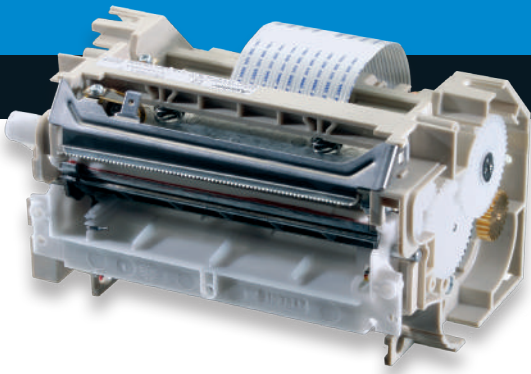
80 / 82,5 mm

Characteristics	Unit	12 Volt	24 Volt
Print Speed	mm/s	150	250
Paper Width	mm	80/82,5	80/82,5
Print Width	mm	72/80	72/80
Resolution	Dots/mm DPI	8 203	8 203
Number of Dots	dot	576/640	576/640
Paper Thickness	µm	60 to 190	60 to 190
Dimensions (W x D x A)	mm	112,75 x 66,4 x 41,7	112,75 x 66,4 x 41,7
Weight	g	390	390
Operating Voltage Range	V	12	24
Mechanism Reliability	Km	> of 100	> of 100
Paper Loading	---	Clamshell™ or Autoloading	Clamshell™ or Autoloading
Cutter	---	Auto cutter (full & partial cuts)	Auto cutter (full & partial cuts)
Cutter Reliability	---	1.5 Million cuts	1.5 Million cuts
Operating Temperature	°C/F	-20 to 60°C / -4 to 140 °F	-20 to 60°C / -4 to 140 °F
Operating Humidity	%RH	20 to 85	20 to 85
Interface	---	RS232 & USB	RS232 & USB
Command Set	---	Compatible ESC/POS™	Compatible ESC/POS™
User Flash Memory	Kbytes	192	192
Sensors	---	End of Paper Cover open	End of Paper Cover open
Human Interface	---	Paper Feed and Reset buttons LED indicator	Paper Feed and Reset buttons LED indicator
Options	---	2 paper path entrances Paper Low sensor input Power and interface cables	2 paper path entrances Paper Low sensor input Power and interface cables
Drivers	---	Windows™ XP / VISTA / Seven / Eight / CE – LINUX	Windows™ XP / VISTA / Seven / Eight / CE – LINUX
Firmware Features	---	Compatible EASYFONT™ Paper Low Management Top of form Management	Compatible EASYFONT™ Paper Low Management Top of form Management
Bar Code Printing	---	1D and 2D	1D and 2D
CEM & Safety Standards	---	UL60950-1, CSA 22.2-60950-1, IEC60950, CE Class B, FCC Class B, ROHS, REACH	



XA /XB Series

80 / 82.5 mm



KEY FEATURES

- Top printing performances - up to 250 mm/s
- High life expectancy values
- Top Of Form management with various opto sensor positions



Characteristics	Unit	XA /XB Standard		XA /XB Premium	
		XAFG	XBFG	XAFV	XBFB
Paper Width	mm	80	82.5	80	82.5
Printing Width	mm	72	80	72	80
Resolution	dot/mm	8		8	
Number of Dots	dot	576	640	576	640
Operating Voltage - Dot - Logic	---	21.6 - 26.4 V 4.5 - 5.5 V		21.6 - 26.4 V 4.5 - 5.5 V	
Printing Speed (max)	mm/s	75		150	
Cutting System	---	Rotary cutter (full or partial cuts)		Rotary cutter (full or partial cuts)	
Paper Loading	---	Clamshell™ or Auto loading		Clamshell™ or Auto loading	
Paper Thickness (max)	µm	60 to 85		60 to 85	
Dimensions (W*D*H)	mm	132.5 x 78 x 85 (without cutter) 132.5 x 78 x 87 (with cutter)		132.5 x 78 x 85 (without cutter) 132.5 x 78 x 87 (with cutter)	
Weight	g	600		600	
Head Pulse Life	pulse	1*10 ⁹		1*10 ⁸	
Mechanical Life	km	150		150	
Cutter Life	---	1.5 Million		1.5 Million	
Operating Temperature	°C/F	-10 to 60 / 14 to 140		-10 to 60 / 14 to 140	
Sensors	---	Head temperature, door open, out of paper		Head temperature, door open, out of paper	
Options / Features	---	Top of form opto sensor Straight or Clamshell™ paper path entrance		Top of form opto sensor Straight or Clamshell™ paper path entrance	
Safety Standards	---	UL 60950-1, CSA 22.2-60950-1, CB (IEC60950-1), ROHS,REACH		UL 60950-1, CSA 22.2-60950-1, CB (IEC60950-1), ROHS,REACH	



Guide to Controller Board Range



Characteristics	Unit	Minicont 5V	TPSB	Compact Board II	
Supported Mechanisms	---	HTPN - 9050	HTP - 9012 - HTP - 9024	MHTA/MGTA	CM/RM series
Character per Line	---	24 or 42	24	36 or 48 (80 mm) 40 or 53 (82.5 mm)	24 or 32 (Standard) 28 or 37 (Premium)
Fonts	---	CP437 + user defined	CP 437, 858 + user defined	CP 437, 737, 850, 852, 858, 860, 862, 863, 865, 866, 1252, 1253 + EasyFont compatible	
Character Size	dot*dot	16 x 24 or 9 x 24	16 x 24	12 x 24 or 16 x 24	
Bar Code Type	---	Code 39,128, UPC- A, UPC-E, JAN8 (EAN), JAN13 (EAN), Interleaved 2/5 Codabar	Code 39,128, UPC- A, UPC-E, JAN8 (EAN), JAN13 (EAN), Interleaved 2/5 (ITF) Codabar	Code 39, 93, 128, UPC- A, UPC-E, JAN 8 (EAN), JAN 13 (EAN) Interleaved 2/5 Codabar, PDF417, QR Code, data matrix	
Operating Voltage	VDC	4.5 - 8 V	12V or 24V (+/- 10%)	12V or 24V (+/- 10%)	
Operating Temperature	°C/F	0 to 70 / 32 to 158	0 to 70 / 32 to 158	-20 to 60 / -4 to 140	
Data Input Buffer	Kbytes	4	1	4	
User Flash Memory	Kbytes	832	48	192	
RAM	Kbytes	128	6	128 (up to 512)	
Interface	---	RS232	RS232 & TTL	RS232 & USB	
Command Set	---	Compatible ESC / POS™	Compatible ESC / POS™	Compatible ESC / POS™	
Additional Sensors	---	---	1	1	
Control Output Option	---	LED	LED (on board)	LED (on board) CDKO management (option)	
CDKO	---	---	---	1	
Dimensions (W*D*H)	mm	59 x 72 x 28	90 x 78 x 30	80 x 80 x 31.5	
Driver	---	Windows™ 98 / 2000 / XP / Vista / CE - Linux / Seven	Windows™ 98 / 2000 / XP / Vista / CE - Linux / Seven	Windows™ 98 / 2000 / XP / Vista / CE - Linux / Seven	
Additional Features	---	* Easyfont™ compatible, Licence agreement	* Easyfont™ compatible, Licence agreement, Paper low	* Easyfont™ compatible, Top of form management, Licence agreement, Paper low	

* A font design & download software tool

Guide to Thermal Printer Range



	Characteristics	TPOS	PCPR
Paper width	54 mm (ISO Card Format)		●
	58 mm	●	
	62 mm		
Cutter	---	Guillotine (as an option)	
Paper loading	Clamshell™		
Interface	RS232		
	RS232 & USB		●
	Ethernet	●	
	Centronics		
	Bluetooth™		
Features	Portable		
	Bicolor printing	●	

Applications	TPOS	PCPR
POS / Hospitality		
Couponing	●	
Automotive (Taxi)		
Gaming / Lottery		
Self Service Kiosks		
Gift Cards		●
Visitor Badges		●
Electronic Fund Transfer - EFT		
Prepaid Phone Cards		●
Test & Measurement		

TPOS

58 mm



KEY FEATURES

- Large paper roll capacity
- Automatic cutter
- Couponing version



Characteristics	Unit	TPOS
Printing Speed (max)	mm/s	150
Printing Width	mm	56
Resolution	dot/mm	8
Number of Dots	dot	448
Number of Columns	column	34 or 44
Character Size	dot*dot	10 x 24 or 13 x 24
Resident Code Page	---	CP 437, 850, 852, 858, 860, 862, 863, 865, 866, 1252
Bar Code Type	---	Code 39, 93, 128, UPC-A, UPC-E, JAN8 (EAN), JAN13 (EAN), Interleaved 2/5, Codabar, PDF-417, QR Code Data Matrix
Paper Width	mm	58
Paper Roll Diameter	mm	90
Paper Thickness	µm	80 (with tear bar), 65 (with auto cutter)
Paper Loading	---	Clamshell™
Operating Voltage	VDC	24 V
Current Consumption	A	3
Head Pulse Life	pulse	1*10 ⁸
Mechanical Reliability	Km	100
Dimensions (W*D*H)	mm	121 x 180 x 124
Weight	g	600
Operating Temperature	°C/F	0 to 50 / 32 to 122
Operating Humidity	%RH	20 to 85
Cutter	---	Manual tear bar or auto cutter (full and partial cuts)
Cutter Life	cuts	1 Million
Data Buffer	Kbytes	4
Flash Memory	Kbytes	704
Interface	---	Ethernet 10/100 (TCP/IP)
Driver	---	Windows™ 98 / 00 / XP / Vista / CE - Linux / Seven / Eight
Emulation	---	ESC / POS™
CEM & Safety Standards	---	UL60950-1, CSA 22.2 – 60950-1, IEC60950-1, CE Class B, ROHS, REACH
Added Features	---	Buzzer, Fixing holes for wall mounting
Colour	---	Beige
Accessories	---	---
Options	---	2 colour printing capability (black & blue or black & red)



54 mm – ISO card format



KEY FEATURES

- Both single & double length ISO format cards printing
- Easy to use - manual front insertion
- RFID card printing capability



Characteristics	Unit	PCPR
Printing Speed (max)	mm/s	80
Printing Width	mm	48
Resolution	dot/mm	8
Number of Dots	dot	384
Number of Columns	column	32
Character Size	dot*dot	12 x 24
Resident Code Page	---	CP 858, 437
Bar Code Type	---	Code 39, UPC-A, UPC-E, JAN8 (EAN8) & JAN13 (EAN13)
Paper Width	mm	54 x 86 & 54 x 172 (Single & double ISO format card)
Paper Thickness	µm	Up to 190
Paper Loading	---	Manual (front feeding)
Operating Voltage	VDC	24
Current Consumption	A	2.5
Head Pulse Life	pulse	1*10 ⁸
Mechanical Reliability	---	50 000 cards
Dimensions (W*D*H)	mm	115 x 228 x 95
Weight	g	635
Operating Temperature	°C/F	5 to 55
Operating Humidity	%RH	20 to 85
Data Buffer	Kbytes	1
Flash Memory	Kbytes	64
Interface	---	RS232 & USB
Driver	---	Windows™ 98 / 00 / XP / Vista / CE - Linux / Seven / Eight
Emulation	---	Axiom control codes
CEM & Safety Standards	---	IEC60950, CE Class B, FCC Class B, ROHS, REACH
Colour	---	Light & Dark Grey





Axiohm France - TXCOM
Parc d'Affaires NOVEOS
10, Avenue Descartes
92 350 LE PLESSIS ROBINSON
France
Tel : +33 (0)1 46 01 05 06

Axiohm Production
33 bis, route de Malesherbes
45390 PUISEAUX
FRANCE

Axiohm USA
2411 N Oak Street
Suite 203C
Myrtle Beach, SC 29577
USA



Website : www.axiohm.com

**Email : namsales@axiohm.com
emeasales@axiohm.com
asiasales@axiohm.com
southamericasales@axiohm.com**